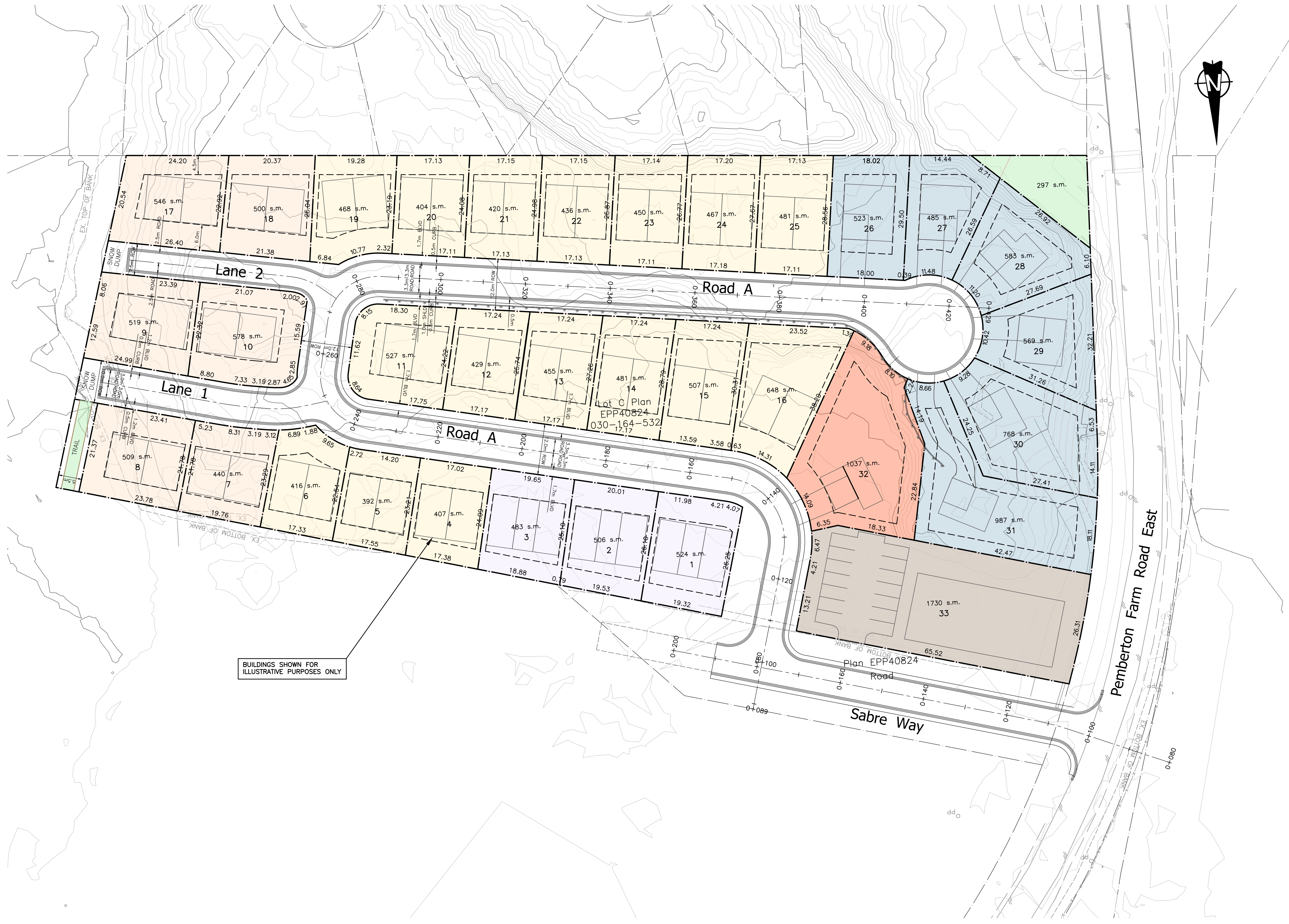


ZONING LEGEND	
	SINGLE FAMILY
	DUPLEX - STANDARD
	DUPLEX - ALTERNATE
	TRI-PLEX
	CO-HOUSING/MULTIPLEX
	COMMERCIAL



Parcel #	Area
Lot 1	524m ²
Lot 2	506m ²
Lot 3	483m ²
Lot 4	407m ²
Lot 5	392m ²
Lot 6	416m ²
Lot 7	440m ²
Lot 8	509m ²
Lot 9	519m ²
Lot 10	578m ²
Lot 11	527m ²
Lot 12	429m ²
Lot 13	455m ²
Lot 14	481m ²
Lot 15	507m ²
Lot 16	648m ²
Lot 17	546m ²
Lot 18	500m ²

Parcel #	Area
Lot 19	468m ²
Lot 20	404m ²
Lot 21	420m ²
Lot 22	436m ²
Lot 23	450m ²
Lot 24	467m ²
Lot 25	481m ²
Lot 26	523m ²
Lot 27	485m ²
Lot 28	583m ²
Lot 29	569m ²
Lot 30	768m ²
Lot 31	987m ²
Lot 32	1037m ²
Lot 33	1730m ²

BUILDINGS SHOWN FOR ILLUSTRATIVE PURPOSES ONLY

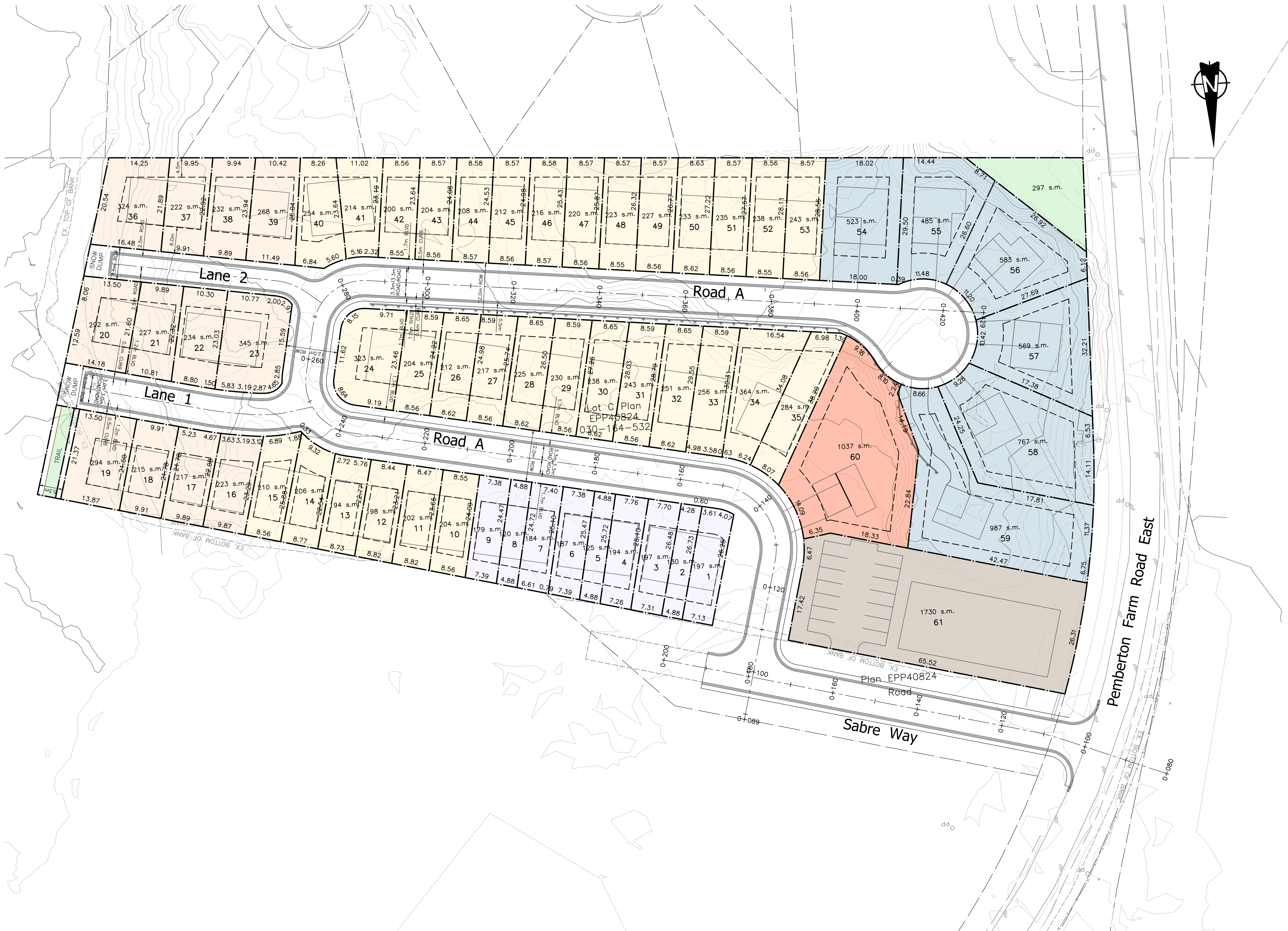
<table border="1"> <tr> <td>1</td> <td>JAN.10.24</td> <td>GENERAL REVISIONS</td> <td>MJF</td> <td></td> </tr> <tr> <td>no.</td> <td>date</td> <td>revision</td> <td>chk'd</td> <td>no.</td> </tr> </table>		1	JAN.10.24	GENERAL REVISIONS	MJF		no.	date	revision	chk'd	no.	client RIVERTOWN PEMBERTON LP c/o MDO REAL ESTATE LTD. project PARKSIDE DEVELOPMENT PEMBERTON, BRITISH COLUMBIA	PROFESSIONAL ENGINEERS 212 - 828 HARBOURSIDE DRIVE, NORTH VANCOUVER, BC V7P 3R9 604-983-0458	EGCB PERMIT No. 1001444 LAND DEVELOPMENT CONSULTANTS	COPYRIGHT RESERVED. THIS DRAWING AND DESIGN ARE, AND AT ALL TIMES REMAIN THE EXCLUSIVE PROPERTY OF WEBSTER ENGINEERING LTD. AND CANNOT BE USED, REPRODUCED OR DISTRIBUTED WITHOUT WRITTEN CONSENT. © 2023 WEBSTER ENGINEERING LTD.	approved designed by J.A.T. drawn by M.J.F. checked by J.A.T. date OCT.25.23	scales hor: 1:500 vert: - PRELIMINARY DEVELOPMENT PLAN 33-LOT drawing no. DEV-1 rev. 1
1	JAN.10.24	GENERAL REVISIONS	MJF														
no.	date	revision	chk'd	no.													

F:\1001444\19_Siteplan_Parkside_Pemberton\PRELIM\PRELIM.DWG PLAK.dwg, 2024-04-18 02:19:04, CG

Parcel #	Area
1	197m ²
2	130m ²
3	197m ²
4	194m ²
5	125m ²
6	187m ²
7	194m ²
8	120m ²
9	179m ²
10	204m ²
11	202m ²
12	198m ²
13	194m ²
14	206m ²
15	210m ²
16	223m ²
17	217m ²
18	215m ²
19	294m ²
20	292m ²
21	227m ²

Parcel #	Area
22	234m ²
23	345m ²
24	323m ²
25	204m ²
26	212m ²
27	217m ²
28	225m ²
29	230m ²
30	238m ²
31	243m ²
32	251m ²
33	256m ²
34	364m ²
35	284m ²
36	324m ²
37	222m ²
38	232m ²
39	268m ²
40	254m ²
41	214m ²
42	200m ²

Parcel #	Area
43	204m ²
44	208m ²
45	212m ²
46	216m ²
47	220m ²
48	223m ²
49	227m ²
50	233m ²
51	235m ²
52	238m ²
53	243m ²
54	523m ²
55	485m ²
56	583m ²
57	569m ²
58	767m ²
59	987m ²
60	1037m ²
61	1730m ²



ZONING LEGEND

- SINGLE FAMILY
- DUPLEX - STANDARD
- DUPLEX - ALTERNATE
- TRI-PLEX
- CO-HOUSING/MULTIPLEX
- COMMERCIAL

client		RIVERTOWN PEMBERTON LP c/o MDO REAL ESTATE LTD.	
project		PARKSIDE DEVELOPMENT PEMBERTON, BRITISH COLUMBIA	
no.	date	revision	chk'd
1	JAN.10.24	GENERAL REVISIONS	MJF

PROFESSIONAL ENGINEERS

WEBSTER ENGINEERING LTD
STEEL ROCKY TERRAIN SPECIALISTS

212 - 828 HARBOURSIDE DRIVE, NORTH VANCOUVER, BC V7P 3R9 604-983-0458

EGBC PERMIT No. 1001444

LAND DEVELOPMENT CONSULTANTS

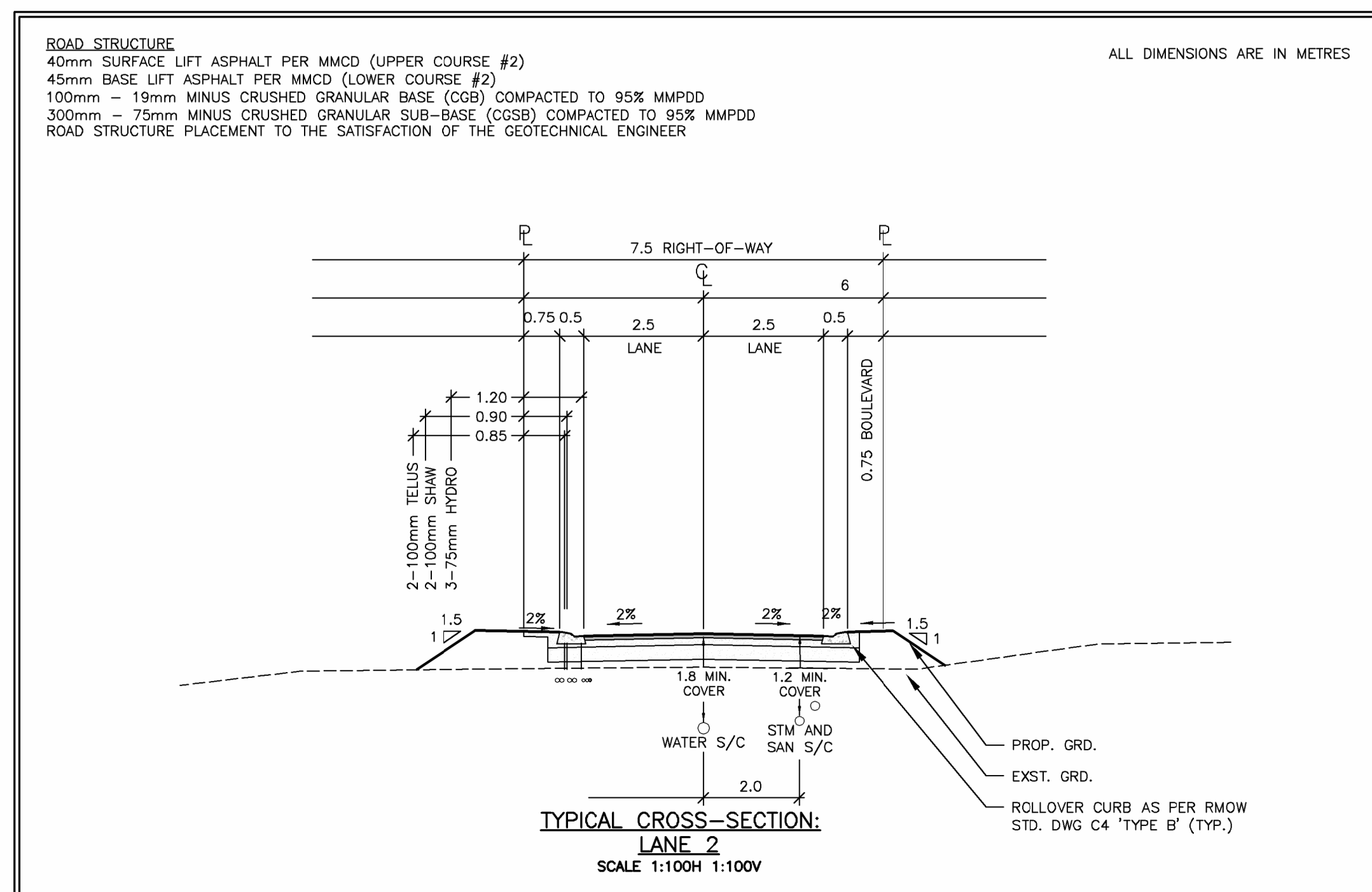
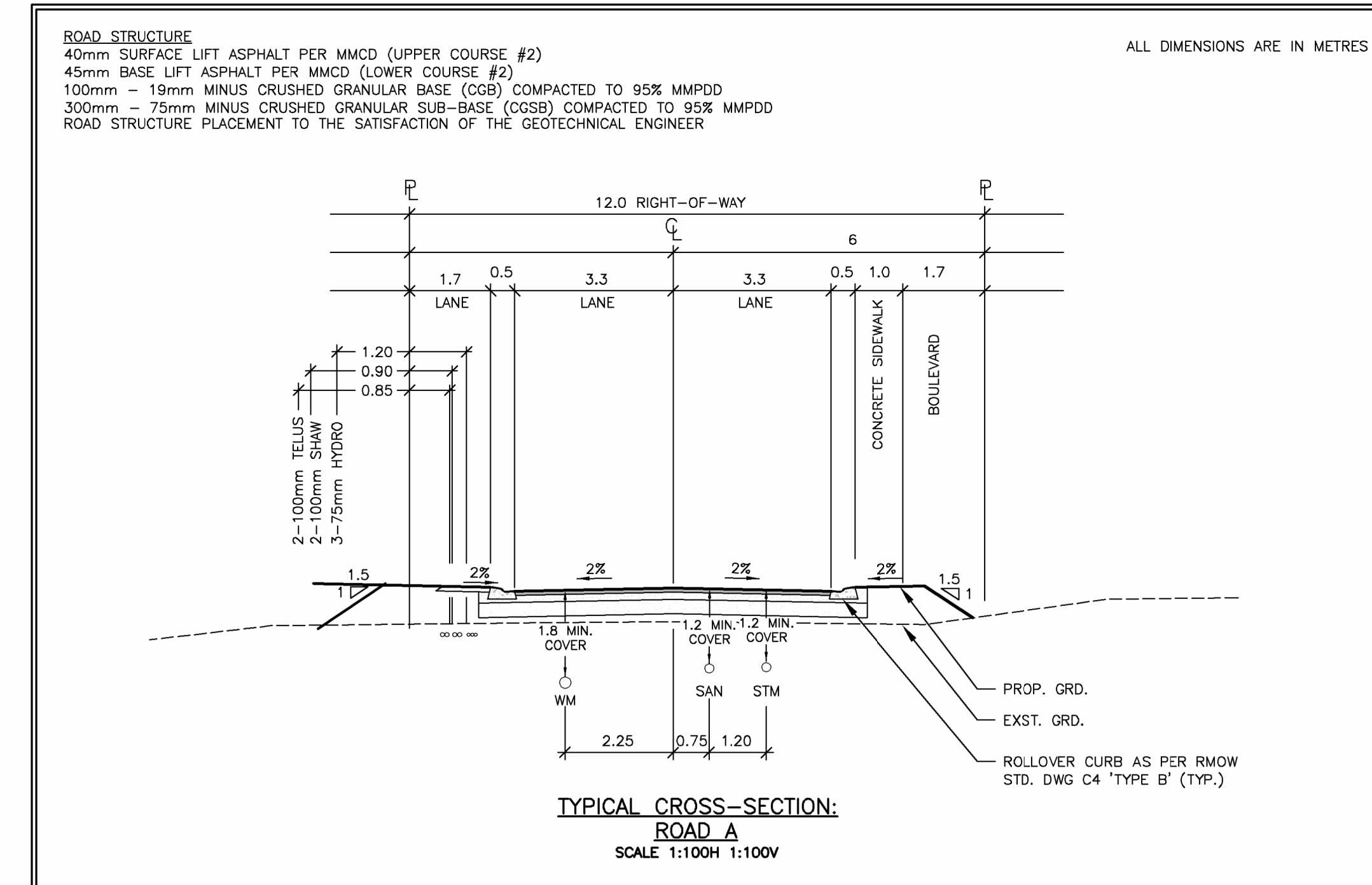
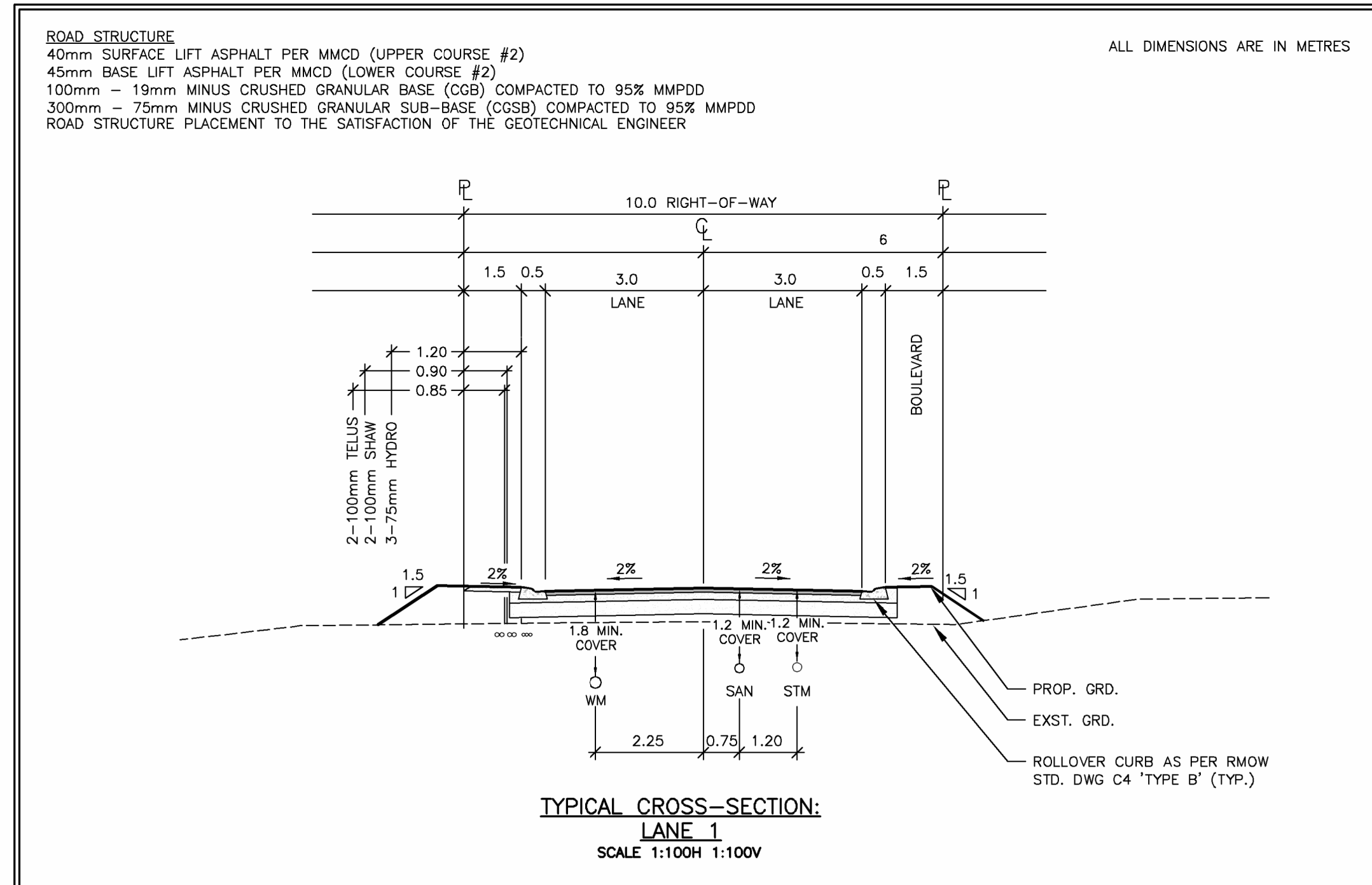
COPYRIGHT RESERVED. THIS DRAWING AND DESIGN ARE, AND AT ALL TIMES REMAIN THE EXCLUSIVE PROPERTY OF WEBSTER ENGINEERING LTD. AND CANNOT BE USED, REPRODUCED OR DISTRIBUTED WITHOUT WRITTEN CONSENT. © 2023 WEBSTER ENGINEERING LTD.

approved	designed by	J.A.T.	title
	drawn by	M.J.F.	
	checked by	J.A.T.	
	date	OCT.25.23	

PRELIMINARY DEVELOPMENT PLAN
61-LOT - FUTURE STRATA SUBDIVISION

scale: hor: 1:500 vert: -
file no. 4194
drawing no. DEV-1 rev. 1

F:\1001444\199_Sustrate_Parcelids_Pemberton\PRELIM\DESIGN\PLAN.dwg, 2023-04-18 9:11:15 AM, CG



no.	date	revision	chk'd	no.	date	revision	chk'd

client
RIVERTOWN PROPERTIES

project
**LOT C - PEMBERTON FARM ROAD EAST
 PEMBERTON, BRITISH COLUMBIA**

PROFESSIONAL ENGINEERS

WEBSTER ENGINEERING LTD.
 STEEP ROCKY TERRAIN SPECIALISTS

EGBC PERMIT No. 1001444

LAND DEVELOPMENT CONSULTANTS

212 - 828 HARBOURSIDE DRIVE, NORTH VANCOUVER, BC V7P 3R9 604-983-0458

approved

designed by J.A.T.

drawn by S.T.

checked by H.K.G.

date JAN.20.22

title
**PRELIMINARY
 TYPICAL CROSS - SECTIONS**

scales hor: 1:100 vert: -
file no. 4194
drawing no. TYP-1
rev. -

F:\1001444\101_Sustainable_Perhaps_Pemberton\PRELIM\101_PRELIM_TYP_SECTION.dwg, 2024/04/17, 5:45:45 PM, G.S.